

Anti-MUSK hIgG1 Antibody(3B2g2m1)

Product information

GM-87838AB-10	10 µg
GM-87838AB-100	100 µg
GM-87838AB-1000	1 mg

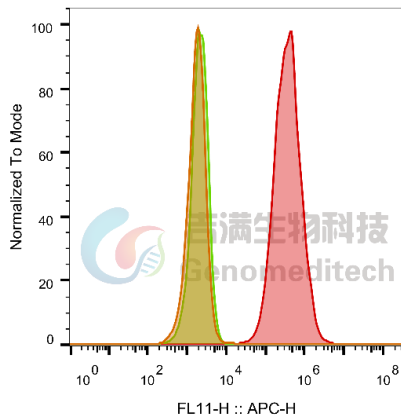
Antibody Information

Species Reactivity	Human; Cynomolgus; mouse; Rat
Clone	3B2g2m1
Source/Isotype	Monoclonal human IgG1, κ
Application	Flow cytometry; Bioactivity-ELISA
Specificity	Detects MUSK
Gene	MUSK
Other Names	CMS9, FADS, FADS1
Gene ID	4593 (human); 102127677 (Cynomolgus); 18198 (mouse); 81725 (Rat);
Background	This gene encodes a muscle-specific tyrosine kinase receptor. The encoded protein may play a role in clustering of the acetylcholine receptor in the postsynaptic neuromuscular junction. Mutations in this gene have been associated with congenital myasthenic syndrome.
Storage	Store at 2-8°C short term (1-2 weeks). Store at ≤ -20°C long term. Avoid repeated freeze-thaw.
Formulation	Phosphate-buffered solution, pH 7.2.
Endotoxin	< 1 EU/mg, determined by LAL gel clotting assay

Data Examples

Flow cytometry

H_MUSK CHO-K1 Cell Line (Catalog # GM-C37363) was stained with Anti-MUSK hlgG1 Antibody(3B2g2m1) (Catalog # GM-87838AB) or isotype control antibody, followed by anti-Human IgG APC-conjugated Secondary Antibody.

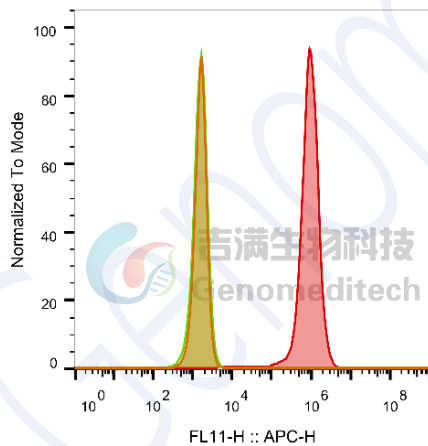


SampleID	Geometric Mean : FL11-H
CHO-K1 anti-MUSK+APC-2nd Ab	1741
CHO-K1 H_MUSK H_IgG+APC-2nd Ab	2087
CHO-K1 H_MUSK anti-MUSK+APC-2nd Ab	359133

Fig. FACS

Flow cytometry

Rat_MUSK HEK-293 Cell Line (Catalog # GM-C37520) was stained with Anti-MUSK hlgG1 Antibody(3B2g2m1) (Catalog # GM-87838AB) or isotype control antibody, followed by anti-Human IgG APC-conjugated Secondary Antibody.

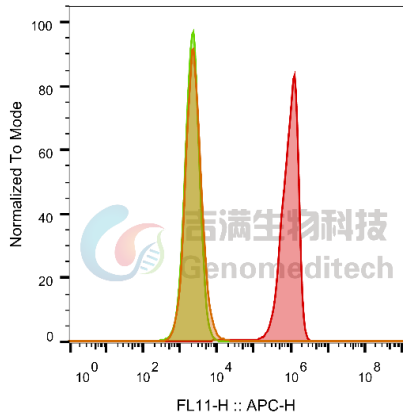


SampleID	Geometric Mean : FL11-H
HEK-293 anti-MUSK+APC-2nd Ab	1605
HEK-293 Rat_MUSK H_IgG+APC-2nd Ab	1589
HEK-293 Rat_MUSK anti-MUSK+APC-2nd Ab	8.50E5

Fig. FACS

Flow cytometry

Cynomolgus_MUSK HEK-293 Cell Line (Catalog # GM-C37629) was stained with Anti-MUSK hlgG1 Antibody(3B2g2m1) (Catalog # GM-87838AB) or isotype control antibody, followed by anti-Human IgG APC-conjugated Secondary Antibody.

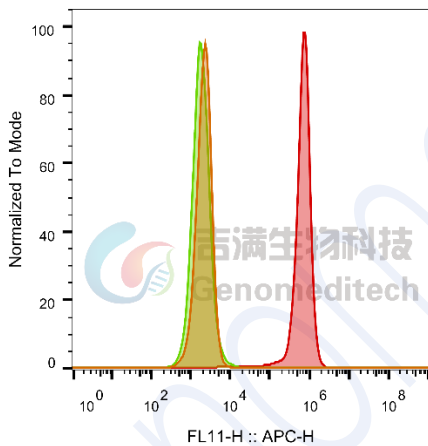


SampleID	Geometric Mean : FL11-H
HEK-293 anti-MUSK+APC-2nd Ab	2384
HEK-293 Cyno_MUSK H_IgG+APC-2nd Ab	2143
HEK-293 Cyno_MUSK anti-MUSK+APC-2nd Ab	8.43E5

Fig. FACS

Flow cytometry

Mouse_MUSK HEK-293 Cell Line (Catalog # GM-C37630) was stained with Anti-MUSK hlgG1 Antibody(3B2g2m1) (Catalog # GM-87838AB) or isotype control antibody, followed by anti-Human IgG APC-conjugated Secondary Antibody.



SampleID	Geometric Mean : FL11-H
HEK-293 anti-MUSK+APC-2nd Ab	2140
HEK-293 Mouse_MUSK H_IgG+APC-2nd Ab	1834
HEK-293 Mouse_MUSK anti-MUSK+APC-2nd Ab	6.27E5

Fig. FACS

Bioactivity-ELISA

Cynomolgus MUSK Protein; His Tag (Catalog # GM-87722RP) was immobilized at 2 µg/ml (100 µL/well). Increasing concentrations of Anti-MUSK hlgG1 Antibody(3B2g2m1) (Catalog # GM-87838AB) were added.

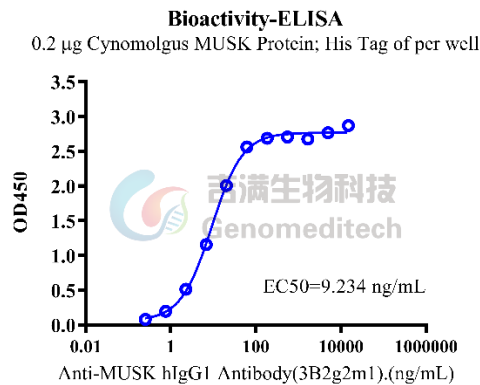


Fig. assay

Version:3.3

Bioactivity-ELISA

Mouse MUSK Protein; His Tag (Catalog # GM-87724RP) was immobilized at 2 µg/ml (100 µL/well). Increasing concentrations of Anti-MUSK hlgG1 Antibody(3B2g2m1) (Catalog # GM-87838AB) were added.

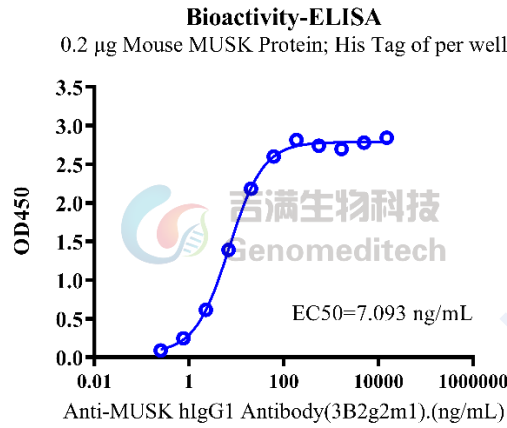


Fig. assay

Bioactivity-ELISA

Rat MUSK Protein; mFc Tag (Catalog # GM-87926RP) was immobilized at 2 µg/ml (100 µL/well). Increasing concentrations of Anti-MUSK hlgG1 Antibody(3B2g2m1) (Catalog # GM-87838AB) were added.

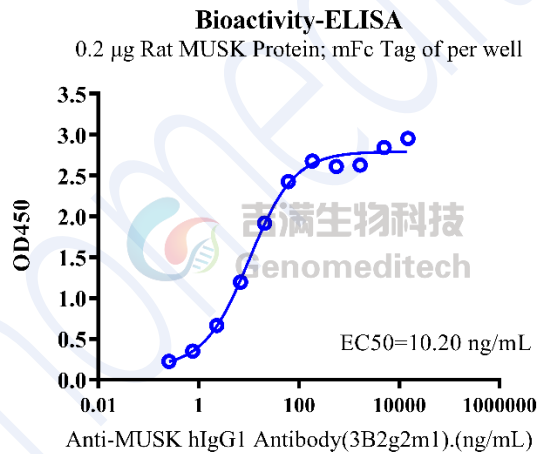


Fig. assay